

## SPECIFICATIONS

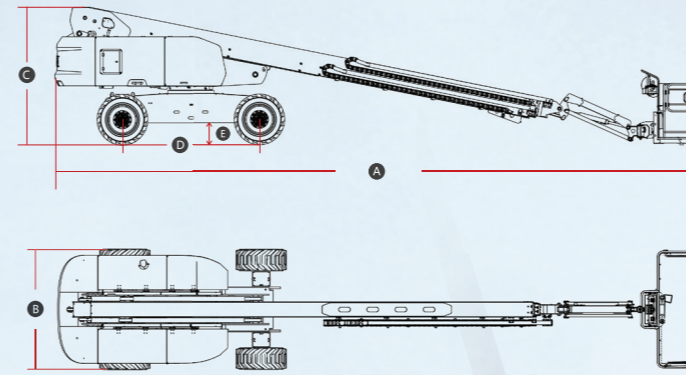
MODELS	T20JE (T65JE)		T22JE (T72JE)		T26JE (T85JE)		T28JE (T92JE)	
	Metric	Imperial	Metric	Imperial	Metric	Imperial	Metric	Imperial
Measurements								
Work Height Max.	21.8m	71'6"	23.8m	78'1"	27.9m	91'6"	29.8m	97'9"
Platform Height	19.8m	65'	21.8m	71'6"	25.9m	85'	27.8m	91'2"
Horizontal Outreach Max.	16.6m	54'6"	16.6m	54'6"	21.6m	70'10"	21.6m	70'10"
Platform Length	2.44m	8'	2.44m	8'	2.44m	8'	2.44m	8'
Platform Width	0.9m	2'11"	0.9m	2'11"	0.9m	2'11"	0.9m	2'11"
<b>A</b> Length-Stowed	10.2m	33'6"	11m	36'1"	12.8m	42'	13.4m	44'
Length - Transport (jib tucked)	8.3m	27'3"	9.03m	29'8"	11m	36'1"	11.47m	37'8"
<b>B</b> Overall Width	2.5m	8'2"	2.5m	8'2"	2.5m	8'2"	2.5m	8'2"
<b>C</b> Height-Stowed	2.77m	9'1"	2.77m	9'1"	2.82m	9'3"	2.82m	9'3"
Height - Transport	2.89m	9'6"	2.88m	9'5"	3.03m	9'11"	3.02m	9'11"
<b>D</b> Wheelbase	2.51m	8'3"	2.51m	8'3"	2.85m	9'4"	2.85m	9'4"
<b>E</b> Ground Clearance	0.4m	1'4"	0.4m	1'4"	0.43m	1'5"	0.43m	1'5"
<b>PRODUCTIVITY</b>								
Platform Capacity (unrestricted)	300kg	661 lbs	300kg	661 lbs	300kg	661 lbs	300kg	661 lbs
Platform Capacity (restricted)	450kg	992 lbs	450kg	992 lbs	450kg	992 lbs	450kg	992 lbs
Max. Platform Occupancy	2 (unrestricted) / 3 (restricted)							
Turntable Rotation	360°Continuous		360°Continuous		360°Continuous		360°Continuous	
Drive Speed-Stowed	5km/h	3.1mph	5km/h	3.1mph	5km/h	3.1mph	5km/h	3.1mph
Drive Speed-Raised	0.8km/h	0.5mph	0.8km/h	0.5mph	0.8km/h	0.5mph	0.8km/h	0.5mph
Gradeability	45%		45%		45%		45%	
Max. Wind Speed	12.5m/s	28mph	12.5m/s	28mph	12.5m/s	28mph	12.5m/s	28mph
Turning Radius-Inside	1.9m	6'3"	1.9m	6'3"	2.04m	6'8"	2.04m	6'8"
Turning Radius-Outside	3.9m	12'10"	3.9m	12'10"	4.13m	13'7"	4.13m	13'7"
Max.Slope	5°/5°		5°/5°		5°/5°		5°/5°	
Tire Type	RT Foam-filled		RT Foam-filled		RT Foam-filled		RT Foam-filled	
Tire Size	355/55D625		355/55D625		15-625		15-625	
<b>POWER</b>								
Power Source	80V DC 375Ah		80V DC 375Ah		80V DC 542Ah		80V DC 542Ah	
<b>HYDRAULIC SYSTEM</b>								
Hydraulic Oil Volume	120L	31.7gal	120L	31.7gal	138L	36.5gal	138L	36.5gal
<b>WEIGHT</b>								
Machine Weight(CE/ANSI)	12000kg	26455 lbs	12300kg	27117 lbs	18200kg	40124 lbs	18700kg	41226 lbs

## New Electric Telescopic Boom Lift

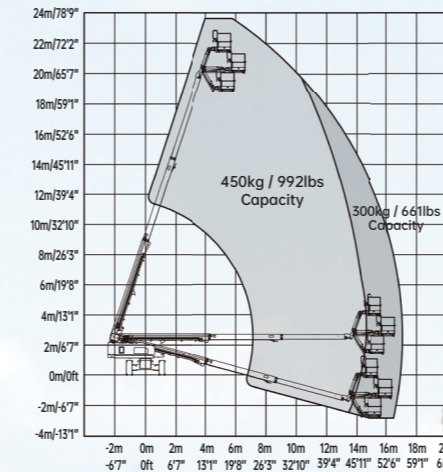
### STANDARD FEATURES

- Proportional control
- Overload sensing system
- Descent alarm with flashing beacon
- Platform auto-leveling system
- Emergency stop button
- On-board diagnostic system
- Oscillating axle
- 4W drive, 4W steering, 4W full-time floating
- Over-tilt protection system
- Anti-collision protection
- Platform control cover
- Cylinder bellows

### MACHINE SIZE



### T22JE WORKING RANGE



### OPTIONAL

- AC power to platform
- Telematics
- Half and full aluminium platform mesh
- Glazier kit
- Auxiliary rail
- Battery isolator switch (double pole)
- White noise alarm
- Non-marking tires
- Solid tires

Please contact LGMG or a local dealer for more details.  
 LGMG reserves the right to change technical data without prior notice. All photos and pictures in this brochure are for promotional purposes only.  
 This brochure comes into effect in February, 2023.

### LINGONG HEAVY MACHINERY CO., LTD.

Address: No. 2676, Kejia Road, Jinan, Shandong, China  
 Email: sales@lmgm.com.cn Tel: +86 531 6787 9283

### LGMG Europe B.V.

Address: Donker Duyvisweg 301, 3316 BL Dordrecht, The Netherlands  
 Email: sales@lmgmeurope.com Tel: +31 850 642 777

### LGMG North America Inc.

Address: 1445 Sheffler Dr, Chambersburg, PA. 17201, USA  
 Email: sales@lmgna.com Tel: +1 833 288 5464

www.lmgglifts.com



RELIABILITY IN ACTION

# LGMG GREEN TECH TELESCOPIC BOOM LIFT



ZERO  
EMISSION

ENERGY  
SAVING

FASTER  
CHARGING

HIGHER  
CAPACITY

4x4x4





## NEW ELECTRIC TELESCOPIC BOOM LIFT

LGMG's new electric telescopic boom lifts are equipped with lithium batteries, benefitting from low noise, and zero emissions, meaning they can meet increasingly stringent environmental requirements. They perform excellently in terms of drivability, stability, and operational precision, which makes these lifts suitable for the toughest job sites.

LGMG's new electric telescopic booms are the first choice for environmentally-friendly construction. The platform heights range from 19.8m(65ft) to 27.8m(91.2ft). With a 2.44m(8ft) triple entry platform, LGMG electric telescopic boom lifts can be operated by up to 3 people (restricted) or 2 people (unrestricted). The 450/300kg(992/661lbs) dual-capacity design allows for more materials to be carried at once, greatly improving efficiency on the worksite.



### Green technology, eco-friendly



- Complete electric drive, noiseless, zero-emission, energy-saving, and eco-friendly.
- Ultra-high capacity lithium battery, 100% maintenance-free, smart battery management system, super-long battery life.
- Various charging modes are available as standard, and a charging pile port is available as optional.

### Excellent RT performance

- Integrated four-wheel-drive system with axles offering strong power and smooth transmission, and 45% gradeability.
- Oscillating, full-time floating axle, maximum 5° tilt angle chassis. It allows the wheels to grip the ground when traversing hard, uneven terrain.



- Equipped with three steering modes: four-wheel steering, crab steering, and front-wheel steering, the boom lifts are also capable of one-touch wheel alignment.

### More comfortable operation

- Proportional lift and drive controls deliver smoother maneuvering, precise positioning and comfortable operation.



### Higher maintenance efficiency

- More than 95% of the main components are interchangeable and so are more than 80% of structural parts, which helps to reduce spare parts storage costs and improve maintenance efficiency.
- Intelligent self-diagnostic system for quick troubleshooting and reduced downtime.

